



Thorney Hedge Road, London, W4 5SB

£575,000

WHITMAN & CO.

SALES · LETTINGS · COMMERCIAL

- Sunny garden
- 889 sq ft of accommodation
- Fantastic transport links

- Substantial balcony
- Sunroom
- No onward chain

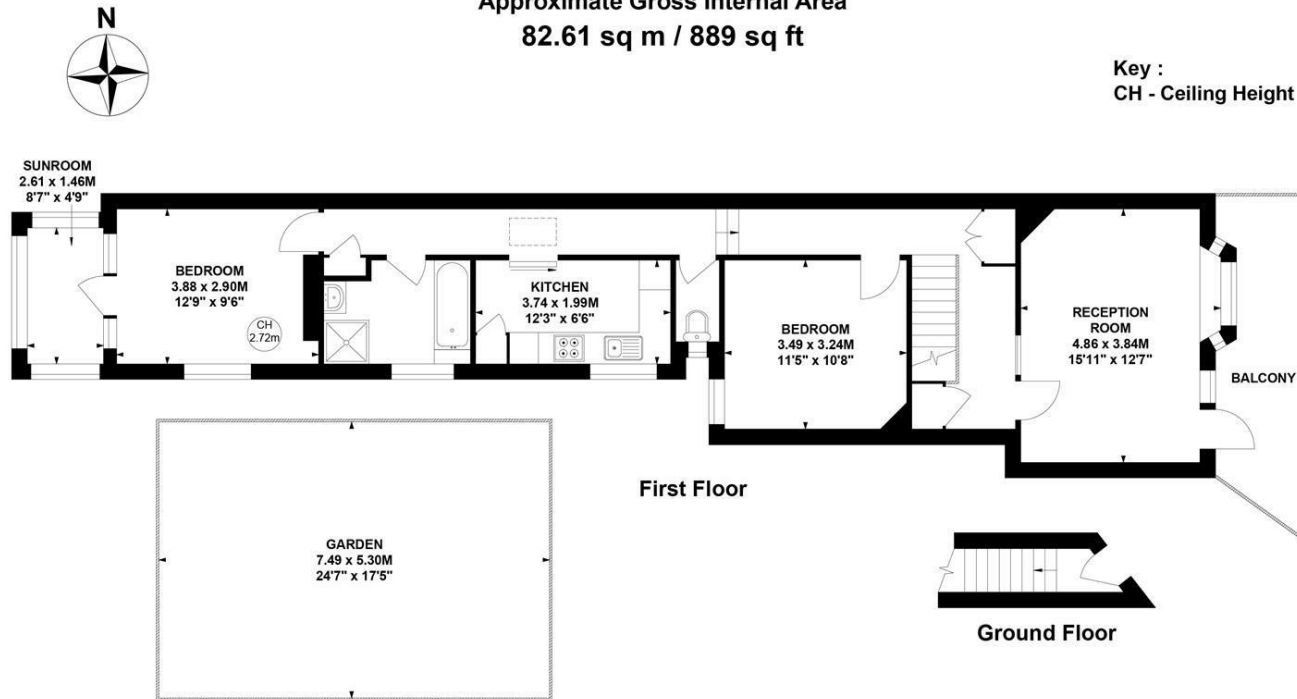
Tenure - Leasehold + share of freehold
 Lease length - 934 years remaining
 Ground Rent - Peppercorn
 Service Charge - £600 approx.
 Local Authority - Hounslow
 Council Tax - Band D

THE PROPERTY

A bright and spacious first-floor apartment with a private garden, ideally located on this tree-lined residential road within the sought-after Belmont School catchment area. This charming property is close to all amenities and offers well-proportioned accommodation, including two double bedrooms, a bright reception room with floor-to-ceiling windows opening onto a private balcony, a fully fitted kitchen, a modern bathroom suite, and a sunroom overlooking the garden. Conveniently situated near Gunnersbury Station (District Line and mainline), it also benefits from easy access to the extensive shopping and dining options on Chiswick High Road. Offered with no onward chain.

Thorney Hedge Road, W4

Approximate Gross Internal Area
 82.61 sq m / 889 sq ft



Not to scale, for guidance only and must not be relied upon as a statement of fact.
 All measurements and areas are approximate only

SITUATION



5-7 Turnham Green Terrace, Chiswick, London, W4 1RG

Tel 020 8747 8800

E-mail sales@whitmanandco.com

Website www.whitmanandco.com

